

Medway Regatta

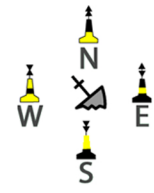
Home Waters Chart



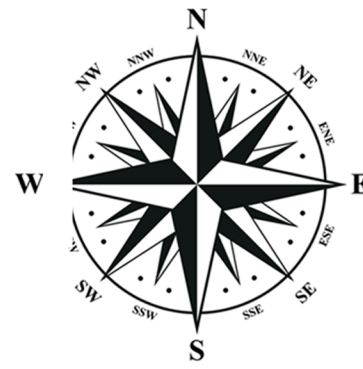
wilsoniansc.org.uk
help@wilsoniansc.org.uk

- Mid-channel buoys
- Lateral buoys/marks
- Isolated danger mark
- Special buoys/marks
- Transit beacons
- Submerged vessels
- Mooring buoys (For commercial vessels)

Cardinal marks



Causeway
(Submerged at high-water)



Version:
28 May 2026

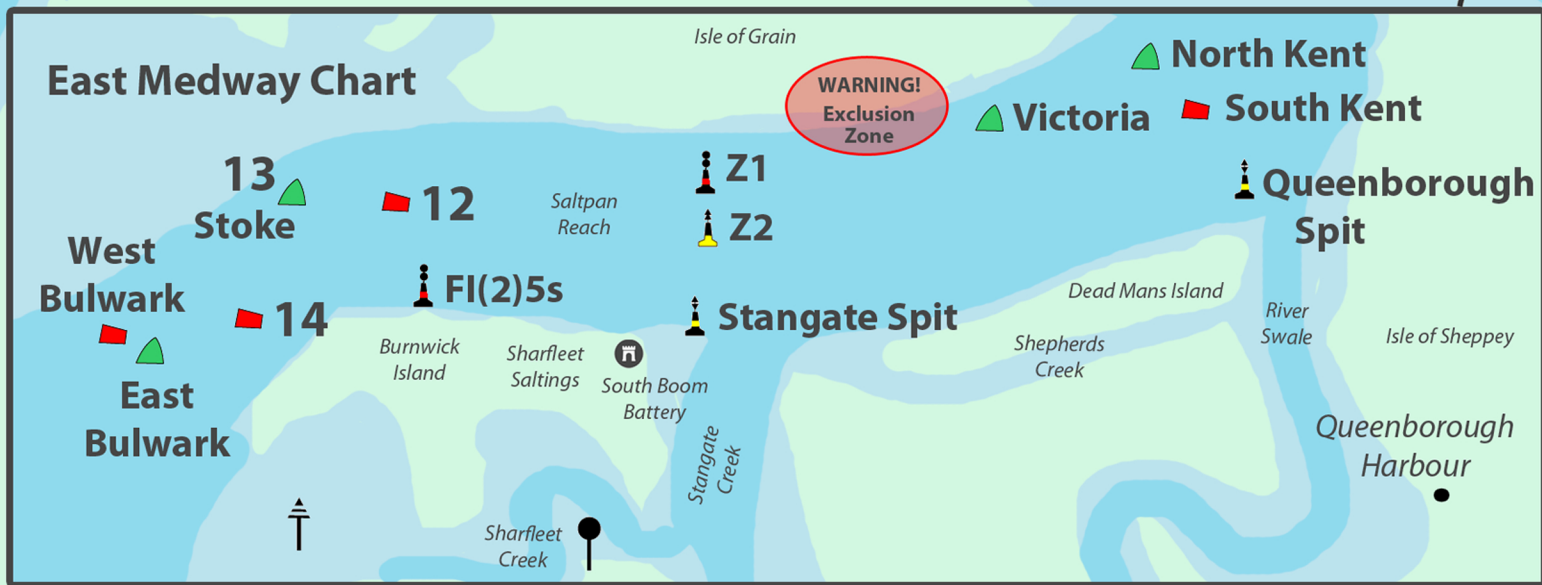
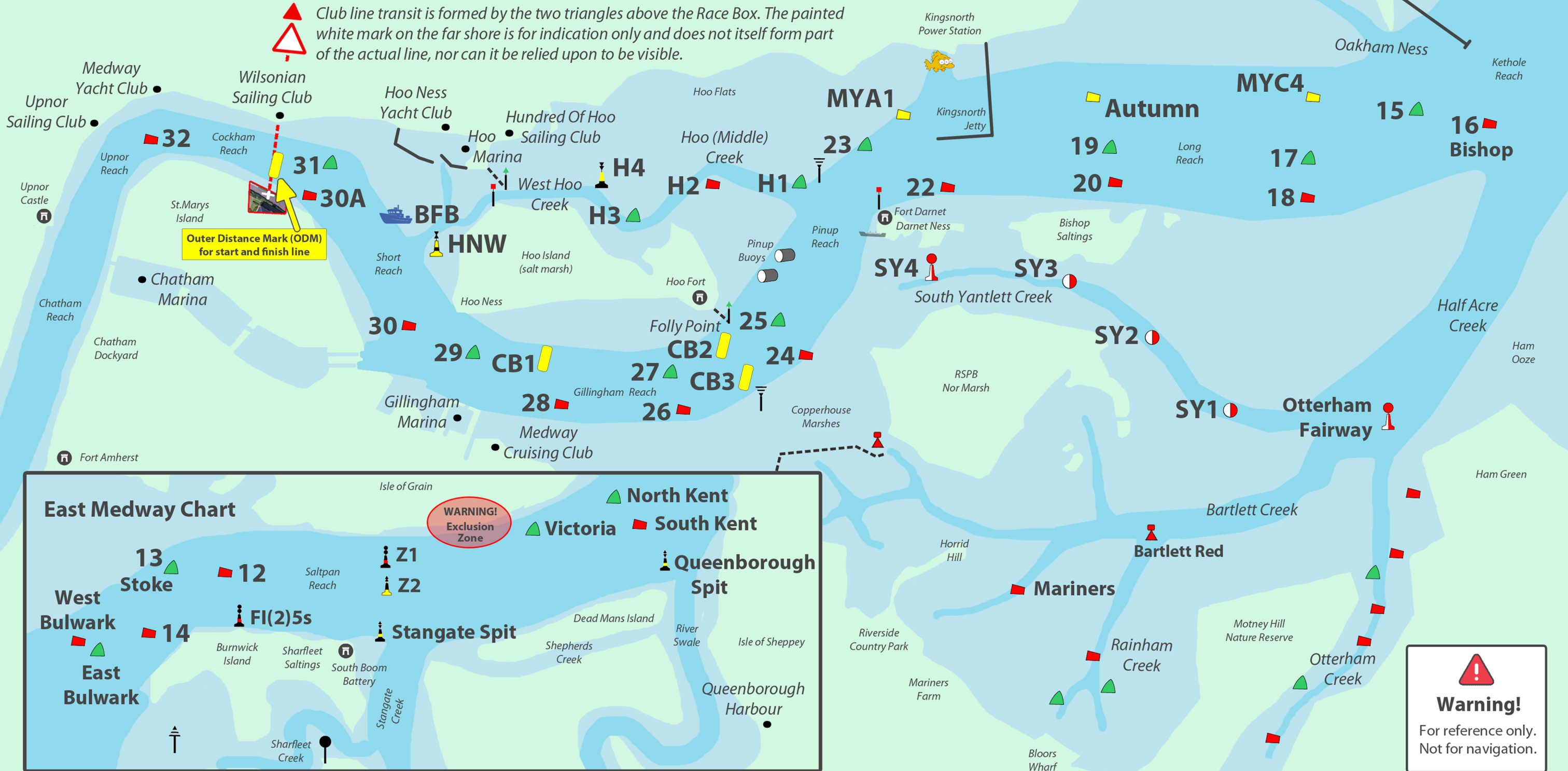
Note the following!

- Buoys posing a risk of going aground: HNW, 24, 26, H1-H4 and SY1-SY4
- Pinup buoys are not used for marks
- Kingsnorth jetty is in place of buoy 21
- Bishop Ooze & Black Stakes removed
- Never sail over a causeway or between the Folly Point and Fort Darnet beacons and their respective islands.
- Never sail between a vessel and its patrol boat with flag:
- Always round buoy 23 to starboard

0 Approximate scale in Miles 1



Club line transit is formed by the two triangles above the Race Box. The painted white mark on the far shore is for indication only and does not itself form part of the actual line, nor can it be relied upon to be visible.



Warning!
For reference only.
Not for navigation.